

Zmotion Fast Configuration Software | RTFuse

system for non-standard vision & motion quick building



What is RTFuse System

RTFuse is one software system that develops machine vision and motion control mainly for non-standard automation equipment. You can do pure-graphic programming through system's rich tools, and no need to edit codes, easy to achieve Chinese programming development. For this system, RTFuse, it has many outstanding advantages, especially for development, like, short development period, high integration of software and hardware, one engineer can debug the entire automation equipment.



Why Choose RTFuse System

Low Technical Requirements

You only need to drag the component to do configuration programming, that is, you can achieve and complete the programming after simple training.

Fast Project Development Period

The programming logic is achieved by one graphic process, so no need to edit lots of codes, then the project is executed from the top to bottom.

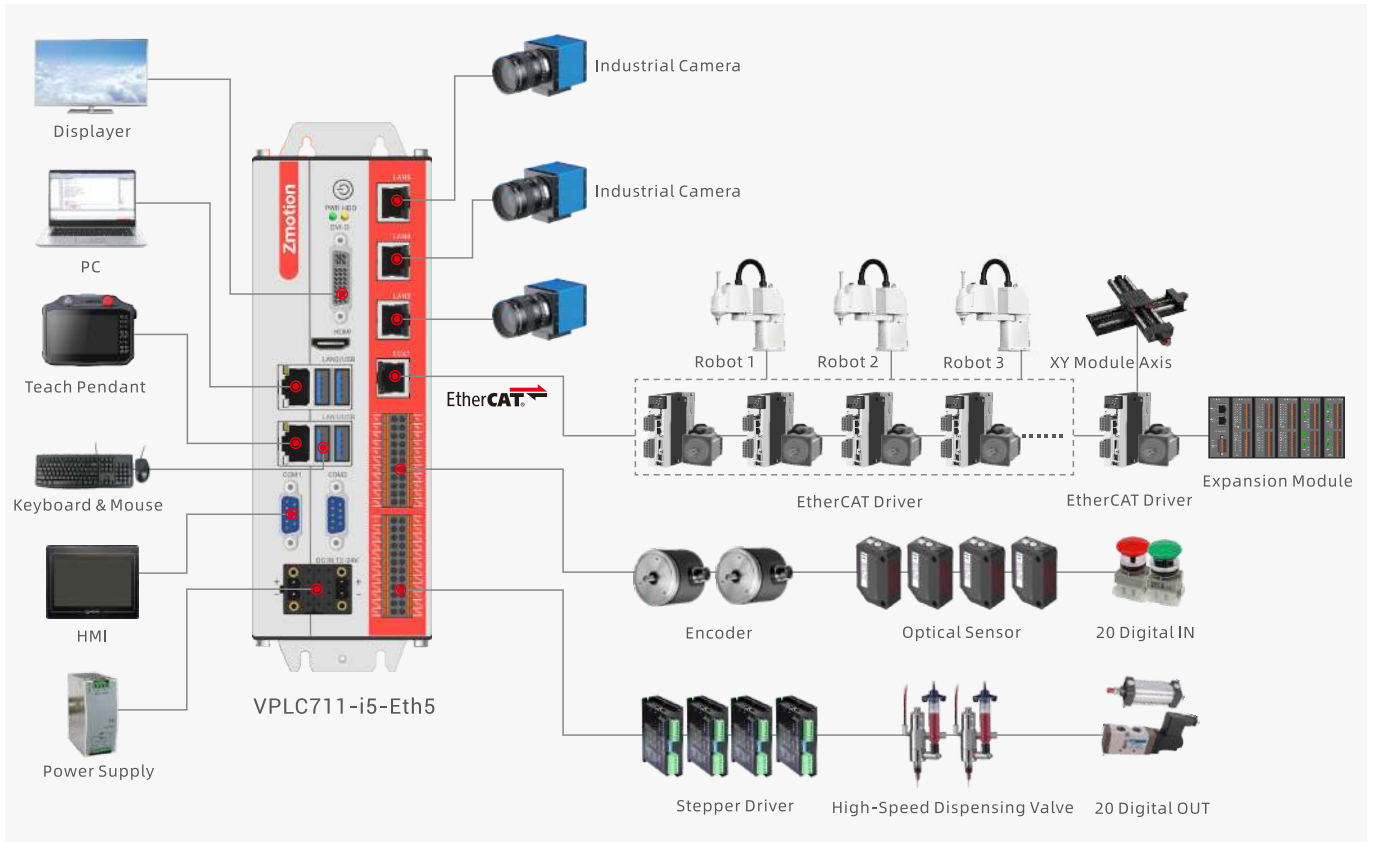
High Soft & Hard Integration

RTFuse integrates EtherCAT with pulse, integrates machine vision and motion control, also software and hardware, so easy to debug your device and find the problem.

Low Labor Cost

RTFuse only needs one person to debug device's motion control, vision control, IO logic control, etc., obviously, your labor cost is reduced a lot.

Solution Scheme



Set Parameters One-Step-Shop



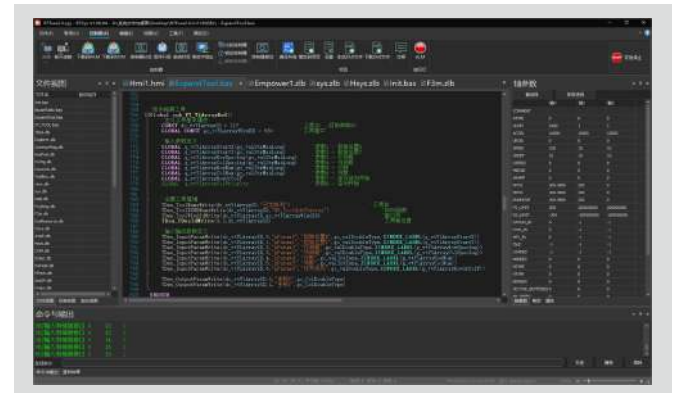
Program Axis Position by Teaching Way



Program Vision by Frame Selection Way



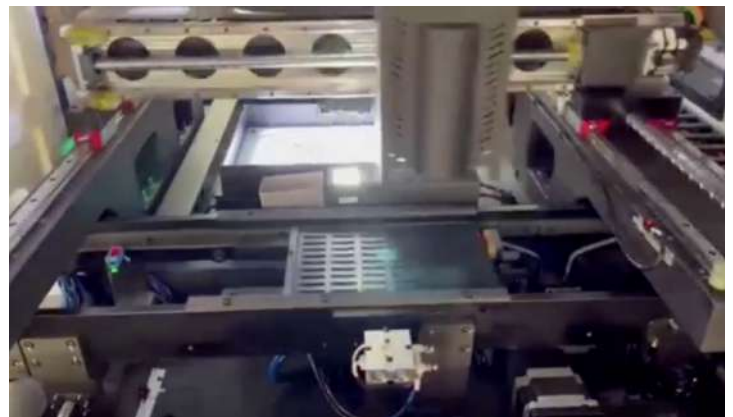
Rich Second-Expansion Tools



Typical Application 1 -- Soft Loading & Unloading

What the Solution is:

RTFuse can be used for soft vision loading and unloading, which supports many kinds of motion models, like, XY module, SCARA, Delta, etc., for the structure, there are soft loading vibration disk, upper camera (positioning and get the material), unloading disk, line module, etc., therefore, in industrial automation production, materials feeding can be achieved well by this.



RTFuse in This Solution:

Quick Development

You can build the vision system on the machine quickly, then, development time can be reduced, project period is shortened, and without complex technique.

High Integration

It has high integration based on the hardware "vision motion controller", machine vision, motion control, IO control, and soft vibration disk are combined.

Easy Configuration

Parameters can be set easily in the software, and it can be integrated with all kinds of soft loading and unloading automation device system.

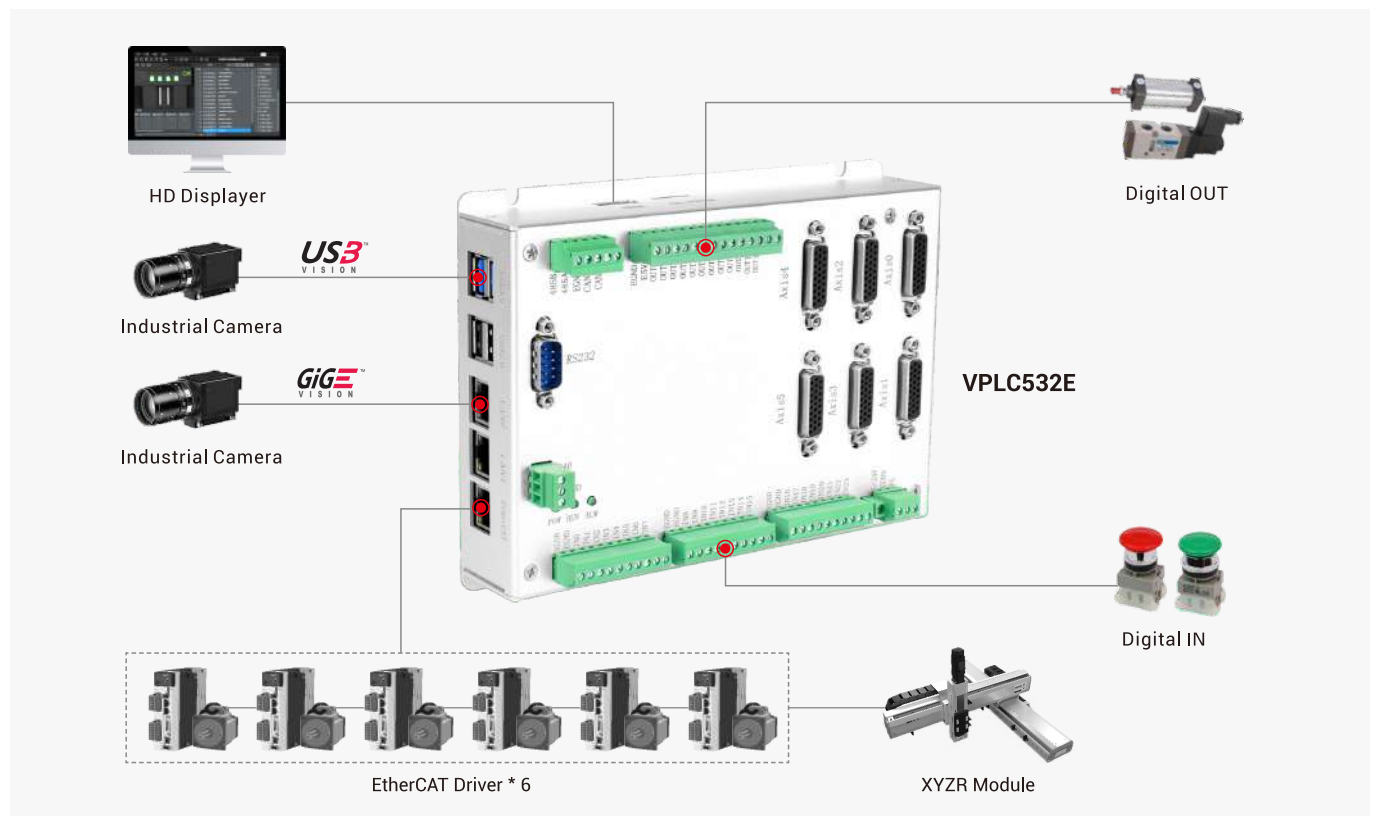
Typical Application 2 -- Dual-Camera Alignment Assembly

What the Solution is:

In the loading structure, XYRZ module gets the material, and moves forward, when it arrives the set position, lower camera will take the picture and do correction. Then, the module brings the upper camera to the assemble position to take photo and correct the material. Next, do alignment and laminating. Therefore, it can be applied in all kinds of alignment laminating situation.



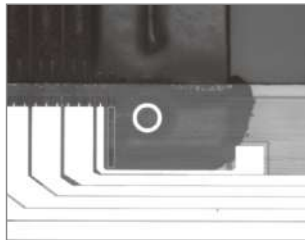
Solution System Structure



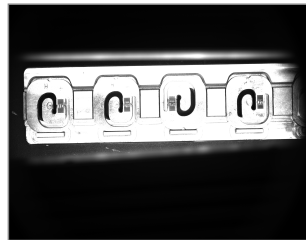
Typical Application 3 -- Machine Vision Related

Introduction:

Mainstream Vision Applications: vision positioning guidance, alignment laminating, defect detection, color recognition, 1D/2D code reading, etc. One can be combined with two cameras, all kinds of mainstream cameras are OK. And there are 16 inputs and 16 outputs, including RS232, RS485 serial ports. What's more, it can communicate with the third party's PLC, motion control.



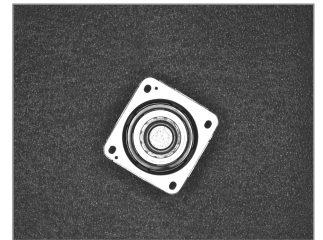
Mark Point Positioning



Detect Defects



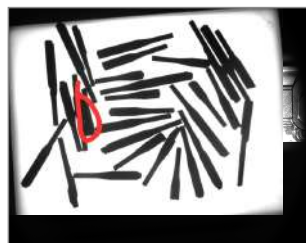
Measure Size



Extract Contour



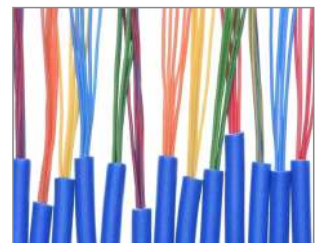
Identify 1D code



Identify Multi-Position

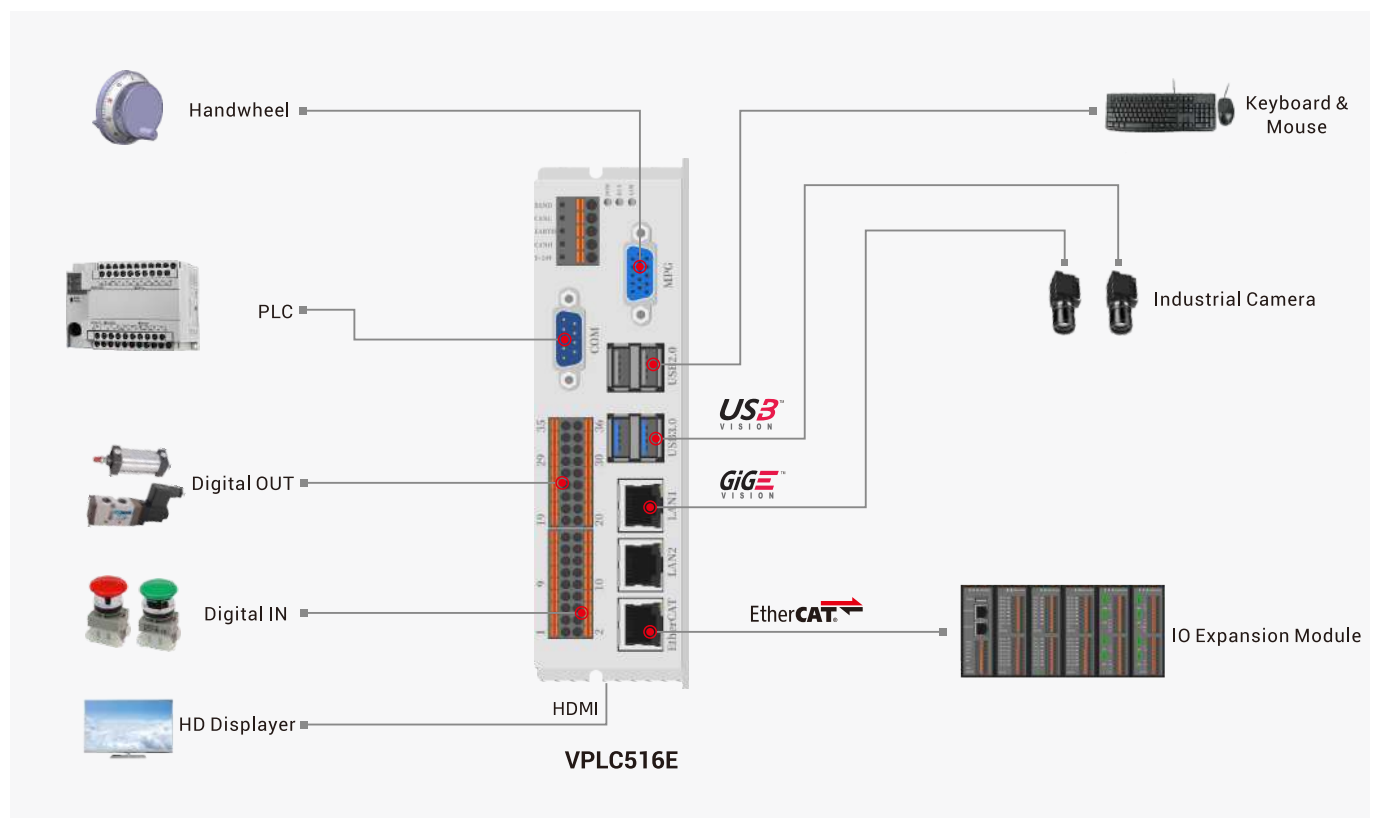


Identify 2D code



Identify Color

Solution System Structure



VPLC5XX Vision Motion Controller -- Model Selection

Model	Image	Axis	En code	All Axes	Pul Frequency	Inner AD	Inner DA	PWM	Inner IN & OUT	Axis Motion Buffer	Pro gram Space	Task	Power off Store	232	485	Net	ECAT	HDMI	USB 2.0	USB 3.0	SD Card Slot	Size (mm)	Functions
VPLC516E-4-RF		4	1+1	32	500K single end	-	-	2	16/16	4096	64M	22	8000	1	1	2	1	1	2	2	1	162*47*119	point, line, circular, cam, continuous interpolation, robotic arm
VPLC516E-6-RF		6	1+1	32	500K single end	-	-	2	16/16	4096	64M	22	8000	1	1	2	1	1	2	2	1	162*47*119	point, line, circular, cam, continuous interpolation, robotic arm
VPLC516E-8-RF		8	1+1	32	500K single end	-	-	2	16/16	4096	64M	22	8000	1	1	2	1	1	2	2	1	162*47*119	point, line, circular, cam, continuous interpolation, robotic arm
VPLC532E-6-RF		6	6	32	10M	-	2	2	24+6/12+6	4096	64M	22	8000	1	1	2	1	1	2	2	1	184*140	point, line, circular, cam, continuous interpolation, robotic arm
VPLC532E-8-RF		16	6	32	10M	-	2	2	24+6/12+6	4096	64M	22	8000	1	1	2	1	1	2	2	1	184*140	point, line, circular, cam, continuous interpolation, robotic arm
VPLC532E-12-RF		32	6	32	10M	-	2	2	24+6/12+6	4096	64M	22	8000	1	1	2	1	1	2	2	1	184*140	point, line, circular, cam, continuous interpolation, robotic arm

X86 Hardware Model Selection

No.	Configuration	CPU	Memory	Hard Disk	Ethernet	Power Supply	Cooling
1	VPLC711-i1-Eth2-V01-RF	J6412	DDR 8G	SSD 128G	2 Gigabit Ethernet	DC24V	No-Fan
2	VPLC711-i5-Eth5-V01-RF	i5-8500	DDR 8G	SSD 256G	5 Gigabit Ethernet	DC24V	Fan Cooling
3	VPLC710-i1-Eth2-V01-RF	J6412	DDR 8G	SSD 120G	2 Gigabit Ethernet	AC220V	Fan Cooling
4	VPLC710-i5-Eth5-V02-RF	i5-8500	DDR 8G	SSD 240G	5 Gigabit Ethernet	AC220V	Fan Cooling

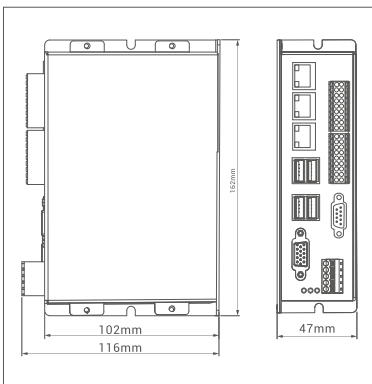
X86 Software Model Selection

AX64 - MO8 - HW - ZV - R1 - NC

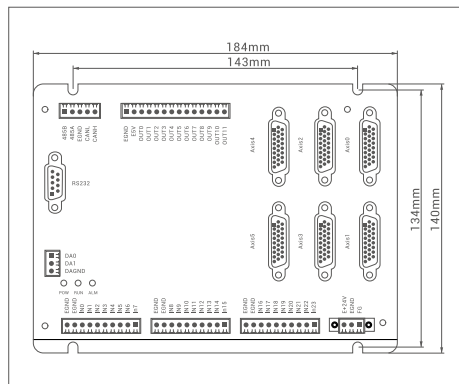
① ② ③ ④ ⑤ ⑥

① 64-Axis (6-128 Axis) ② Motion Control ③ PSO ④ Vision ⑤ R1 normal robot ⑥ NC function / G code
R6 6-joint robot & special structure CNCxxx / CNCxxx

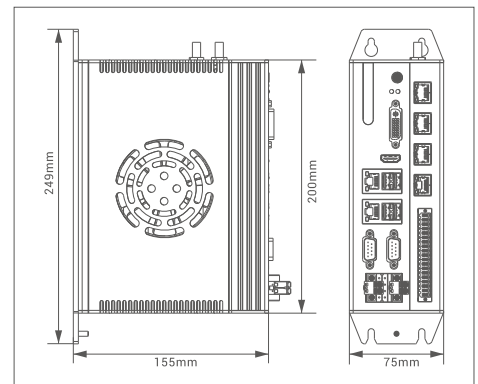
Controller Size



VPLC516E Size



VPLC532E Size



VPLC711 Size

更多正运动相关信息



关于我们



产品中心



行业应用



新闻中心



支持与服务



加入我们

Shenzhen Zmotion Technology

Tel: +86 19925228195

Fax: 0755-2606 6955

Website: www.zmotionglobal.com

Address: 3-7F, Building A I, Southern Industrial Zone, No2-3, Hezhou Community, Hangcheng Subdistrict, Baoan District, Shenzhen City, Guangdong Province, China 518000

Wechat: +86 19925228195

Whatsapp: +86 19925228195

Email for marketing: zlm@zmotion.com.cn



正运动技术



正运动小助手 (学习园地)